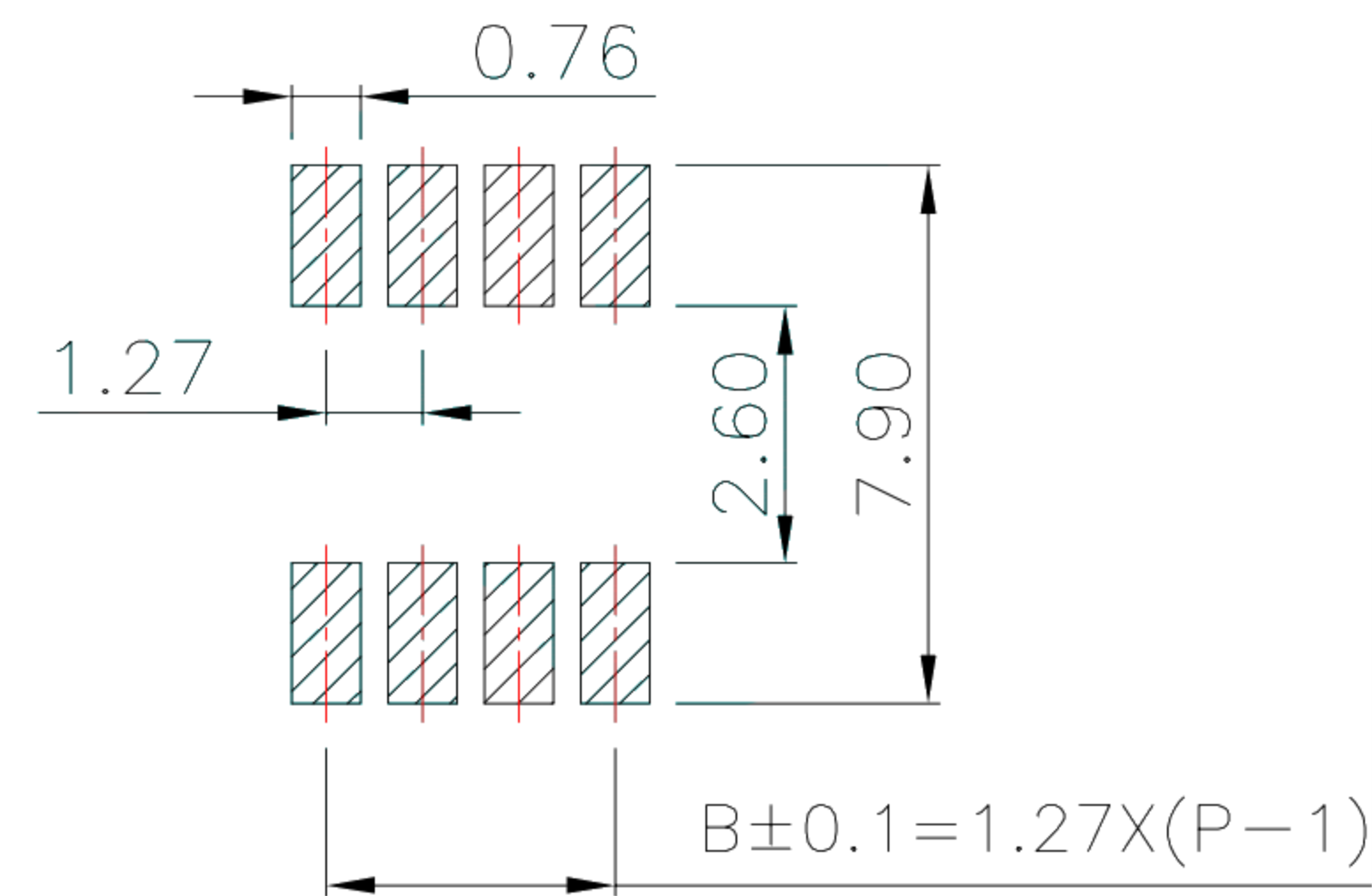
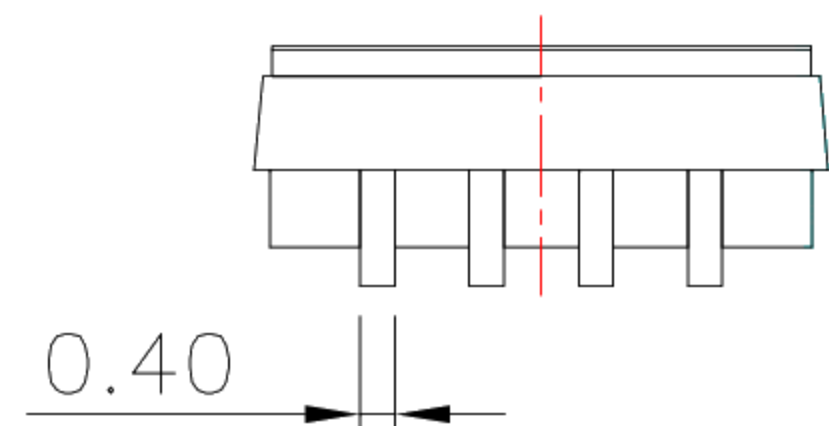


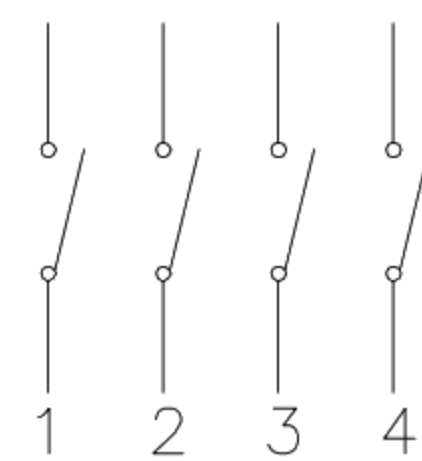
PART NO.	NO.OFPOS	DIM.A
XB-DSHU-01	1	2.87
XB-DSHU-02	2	4.14
XB-DSHU-03	3	5.41
XB-DSHU-04	4	6.68
XB-DSHU-05	5	7.95
XB-DSHU-06	6	9.22
XB-DSHU-07	7	10.49
XB-DSHU-08	8	11.76
XB-DSHU-09	9	13.03
XB-DSHU-10	10	14.3
XB-DSHU-12	12	16.84



PCB Layout(Pattern Side)

SPECIFICATION

Contact Rating:	25mA,24V DC
Contact Resistance:	50mΩ max
Insulation Resistance:	100mΩ min.500V DC
Dielectric Strength:	500V AC/1minute
Operating Force:	1000gf max
Travel:	2mm
Operating Life:	3000cycles
Operating Temp:	-20℃~+70℃
Storage Temp:	-30℃~+80℃



Circuit Diagram

4	Terminal		Copper Alloy	T: Tin plated G: Plating Gold≥15MU
3	Base	1	Pa66	Black
2	Keystake	1	Pa66	white
1	Cover	1	Pa66	Black Blue Red
ITEM	PAPT NAMF	QTY	MATERIAL	FINISHING

					DSND	SCALE: N/A	MODEL TYPE: DIP SWITCH		
					DWN	VIEW:	PART NO.: XB-DSHU-XX		
					CHKD	UNIT: mm/in	DWG NO.:		
					APPD	SIZE: A4			
					DONG GUAN XI BANG ELECTRONIC CO., LTD		WEIGHT	SHEET	REVISIC
								1/1	A0

